

# Flexible. Precise. Unique.

**HE HOMAG**

## Our Edgebanding and trimming machines

EDGETEQ T-100  
EDGETEQ T-200

**YOUR SOLUTION**



# Shaped parts and straight edges EDGETEQ T-200 – the “one for all jobs“

## New Machine Concept

The EDGETEQ T-200 is not only a new machine, it represents a flexible machine concept.

The goal of the new development was to have a machine not only for efficiently and reliably gluing a series of formed parts but also for processing smaller quantities of straight parts.

## Direct glue application

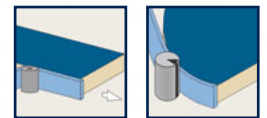
The EDGETEQ T-200 has a gluing system, which applies the glue directly on to the edgebanding material. The coil-cut off device is either activated by foot pedal or, for serial production, by pre-selecting the edge length via digital length counter.

The panel is placed on height spacers, which are fixed on the working table, according to the shape of the panel. No template is required.

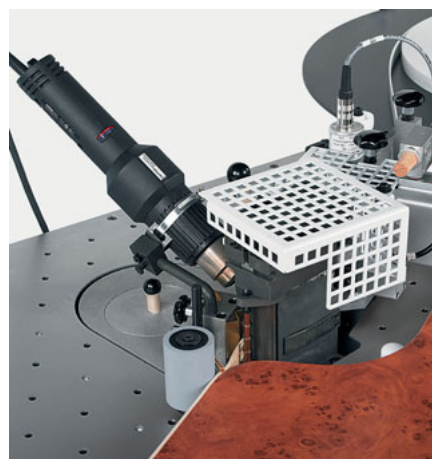
Because of the flexibility of the EDGETEQ T-200, shaped parts and straight parts can be processed easily on this machine.



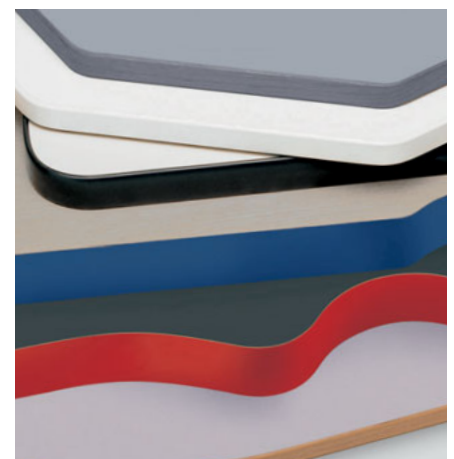
EDGETEQ T-200	
Workpiece thickness	10 - 55 mm
Workpiece width	min. 30 mm
Edge length	min. 180 mm
Edge thickness	0,5 - 3 mm
Coil cut-off	0,5 - 1,0 mm (Edge height max. 60 mm)
Coil cut-off	1,0 - 3,0 mm (Edge height max. 30 mm)
Feed speed	variable 3,0 - 9,0 m/min
Working height	925 mm
Machine dimensions LxW	2078 mm x 1186 mm
Electrics	400 V – 3 Ph – 50 Hz
Pneumatic	6 bar
Weight	approx. 280 kg



**Intuitive operation via 3,5" touch display.**



**Additional heating unit (optional)**  
To pre-heat thick PVC-edges.



# Flush trimming of shaped parts EDGETEQ T-100

– reliable – efficient



The EDGETEQ T-100 has been conceived as complementary to the contour edge banding machine EDGETEQ T-200.

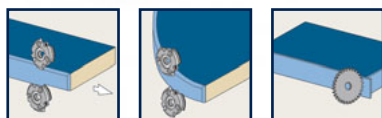
The main application of the T-100 is shaped workpieces, where internal as well as external radii can be processed.

Also straight workpieces can be easily processed.

## Shaped workpiece trimming technology

For small shops the EDGETEQ T-100 is offering a flexible and cost effective solution for their trimming requirements.

In order to process internal and external shapes, the trimming motors are mounted vertically.



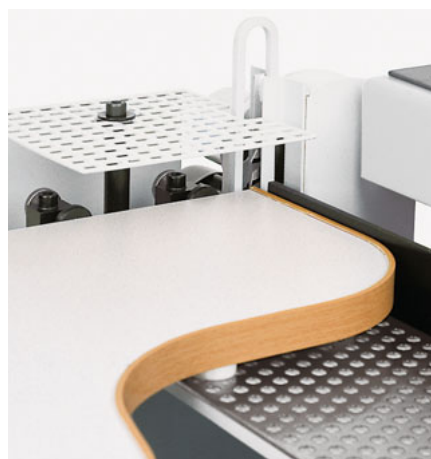
EDGETEQ T-100	
Workpiece thickness (Radius trimming)	16 - 55 mm
Workpiece thickness (chamfer trimming)	16 - 55 mm
Workpiece width	min. 30 mm
Edge thickness	max. 3 mm
Extraction	1 x Ø 80 mm
Working height	925 mm
Machine dimensions LxW	1130 mm x 765 mm
Electric	400 V – 3 Ph – 50 Hz
Pneumatic	6 bar
Weight	approx. 250 kg

TAll rights for technical changes withheld. Individual machine details shown may include options.



## Contour-trimming

Constant trimming results through the use of precise ball bearings to trace the workpieces.



## End trimming unit EK 13 for EDGETEQ T-100 and EDGETEQ T-200 (optional)

For the exact end trimming of overhanging edge materials on shaped and straight workpieces.

Modern 12.000 rpm trimming motors, based on frequency-inverter-technology for maximum output.

The standard machine is fully equipped to cover the entire range of trimming work on different workpieces.

A centric copywheel and a fine adjustable top and bottom tracing device ensure optimum accuracy and perfect trimming results.

## **HOMAG Group AG**

info@homag.com  
www.homag.com



## **YOUR SOLUTION**