

Extra Large Size 4 Side Moulder

For laminated beam and log house timber planing, profiling.

CE



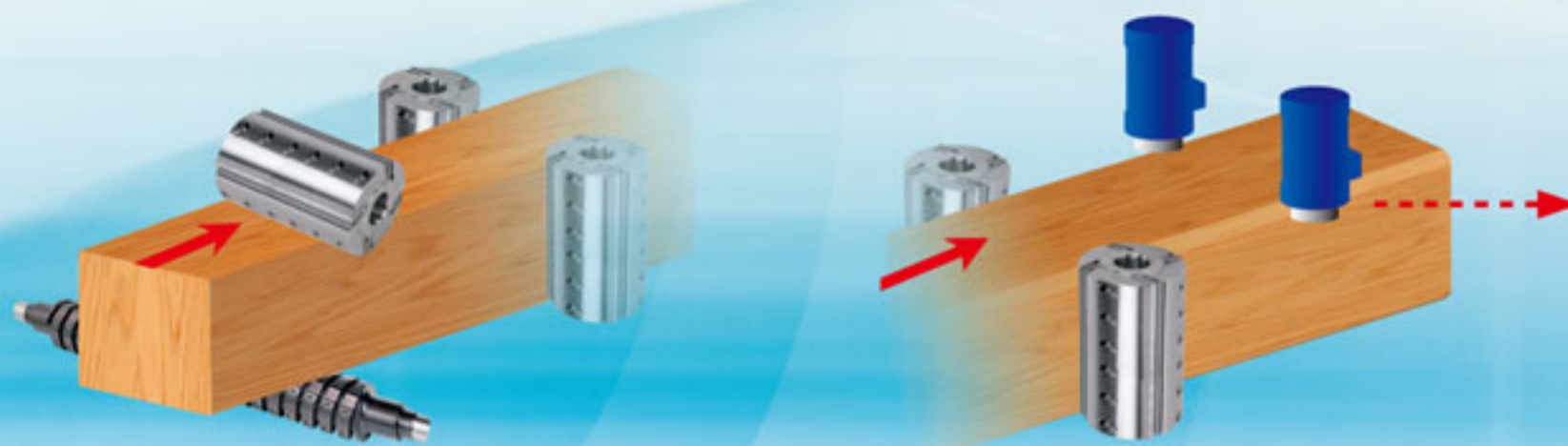
PS4/500A

The new extra large size 4 side planer/moulder with high-performance functions particularly suitable for planing laminated beams or prefabricated log houses, as well as for any boards or beams of green wood or twisted wood. Max. working width: 500mm x 250mm height, optional 300mm working height available. Inverter control of max. feeding speed up to 40m/min. Digital readout setting of thickness and vertical spindle moving, plus more...

HOLYTEK

***Heavy-duty Cardanic Transmission Feeding
with Pneumatic Individual Pressure Roller
Top and Bottom Feeding Roller.***

PS4/500A



System and Powerful



■ Infeed Unit and Precision Guide Fence with Table Rollers and Side Pressure Roller Allow Smooth Feeding.

Precision guide fence with rigid design and heat-treatment for long term use, easy setting-up. Long infeed unit together with front table elevation always.



■ Heavy-duty Spiral Cutterhead for Bottom Spindle

The slide way of bottom spiral cutterhead with two ways of TCT tips (30x12x1.5mm) for long term working save the knife grinding and setting time.



■ Cardanic Transmission and Gear Reducer System for Feeding Unit

With 9 sets of upper motorized feeding rollers and 5 sets of powerful bed rollers allow feeding to be performed more easily. (PS4/500A) (PS6/500A with 6 sets power bottom roller)

■ *Chanfering units
are optional (PS6/500A)*



■ **New Design For 6 pcs Slide Supporter & More Pressure Roller For Outfeed.**

More power feeding roller for outfeed & heavy-duty design with six slide supporter.



■ **Vertical Spindle Unit and Digital Readout Setting by Motorized Moving.**

All the adjustment for vertical spindle unit with mechanical digital readout and motorized moving by digital setting for left vertical spindle unit. Bigger space for vertical spindle easy change of cutterhead.



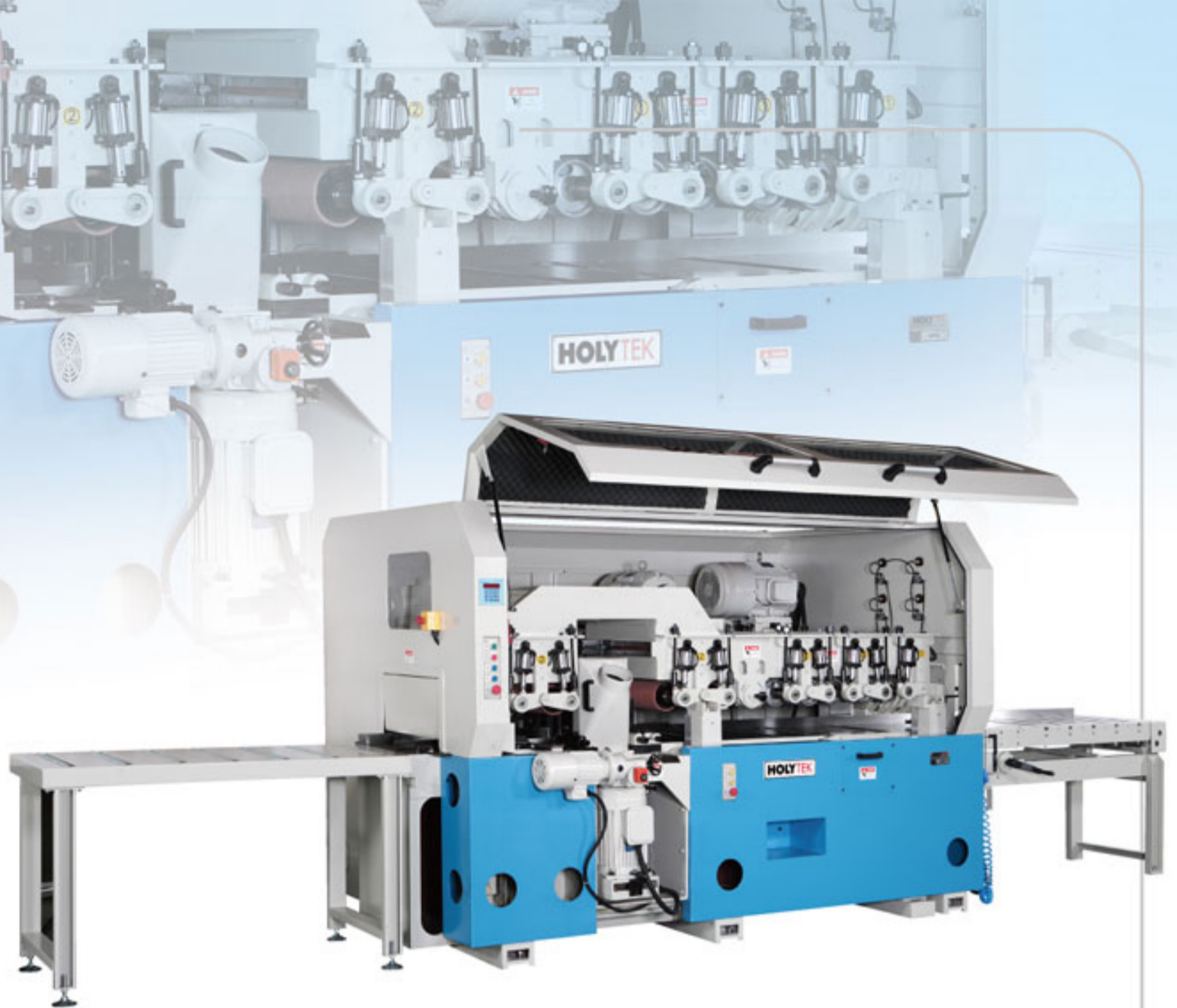
■ **Easy Control and Moveable Type Panel, Digital Readout Setting of Thickness**

Feeding speed by inverter control, variable speed up to 40m/min.



■ **Pneumatic Pressure Gauge**

With different air gauge of pressure roller allow more smooth feeding.



Other Design Features:

- Lubrication unit for all moving slides is standard.
- Infeed roller table: 1.0m, outfeed roller table: 1.5m, is standard.
- All sound-proof enclosure is standard.
- Top profile cutting capacity up to 20mm.
- Heavy and sturdy modular frame with bigger dia. of feeding roller.
- Working table at fixed height with motorized upper section, mobile on 6 dovetail slide way, controlled by a high precision reducer.
- Mobile table of the surface planer removal, sliding on prismatic guides same as normal 4 side moulder design guarantee the accuracy.
- Feed rollers controlled by very strong cardan-joints. Individual pressure rollers are easily changed in case any worn-out roller needs changing.

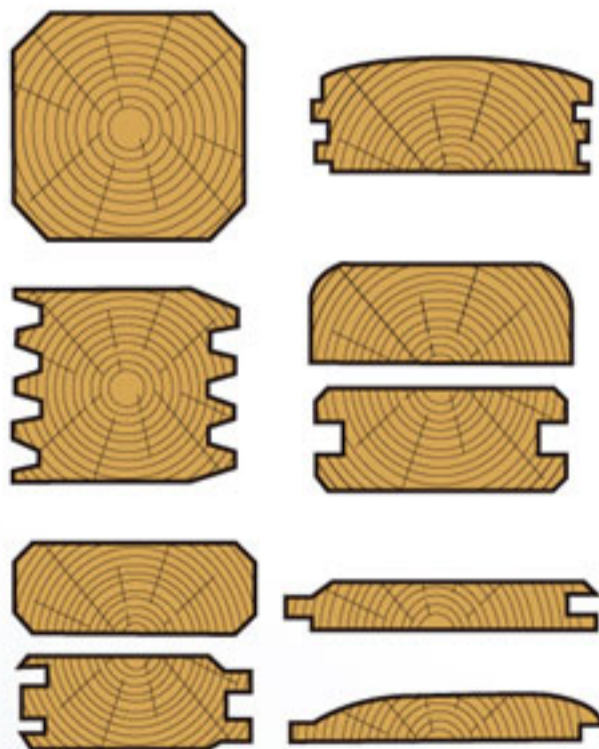


SPECIFICATIONS

MODEL	PS4/500,750A	PS6/500,750A
Max. working width x thickness (horizontal)	500(750)x300mm	-ditto-
Max. working width x thickness (vertical)	500(750)x250mm	-ditto-
Mini. working width x thickness	100x20mm	-ditto-
Bottom spindle power	15HP(PS4/750A:20HP)	-ditto-
Top spindle power	20HP(PS4/750A:25HP)	-ditto-
Vertical spindle power	10HPx2(optional:15HPx2)	-ditto-
Feeding power	10HP(optional:15HP)	-ditto-
Feeding speed	5~40m/min.(by Inverter control)	-ditto-
Thickness elevation motor	1HP(PS4/750A:2HP)	-ditto-
Chanfering units motor	-	3HPx2
Horizontal cutterhead dia.	φ 125 mm	-ditto-
Max. profiling depth of top spindle	20mm	-ditto-
Max. profiling knife dia. of top spindle	200mm	-ditto-
Vertical spindle dia.	φ 50mm (φ 60mm)	-ditto-
Max. profiling knife dia. of vertical spindle	200mm	-ditto-
Spindle speed	6000RPM	-ditto-
Table height from floor	900mm	-ditto-
Outfeed roller table	1.5m(L)	-ditto-
Infeed roller table	1.0m(L)	-ditto-
Dust hood outlet dia.	6"x5pcs	6"x4pcs/4"x2pcs
Machine size	550x220x200cm	550x220x200cm
Packing size	400x220x220cm	400x220x220cm
N.W./G.W.	5500kgs/6000kgs	6000kgs/6600kgs

*All specifications, dimensions and design characteristics shown in this catalogue are subject to change without notice.

Allows You to Work with Different Profiles!



Standard Equipment

- Max. working width x thickness (horizontal) : 500 x 300mm
- Max. working width x thickness (vertical) : 500 x 250mm
- Power feeding motor : 10HP
- Bottom spindle w/heavy-duty spiral cutterhead (30 x 12 x 1.5 mmTCT tips)
- Top spindle w/ serrated cutterhead (6T) for profiling & planning
- Vertical spindle w/ serrated cutterhead (6T) for profiling & planning
- Digital readout setting of thickness standard
- Digital readout setting of left vertical moving standard
- Micro. Adjustment of top profiling knife setting-up
- Slide way of bottom spiral cutterhead, easy change of TCT tips.
- Power top feeding roller : 9 sets, power bed roller : 5 sets (PS4/500A), 6 sets (PS6/500A)

Optional

- Max. working width x thickness (vertical) : 500 x 300mm
- Chamfering units on the rear of M/C - PS6/500,750A
- Optional working width : 750mm.
- Optional bigger power of spindle
- Optional top spindle serrated knife size and gib

HOLYTEK

HOLYTEK INDUSTRIAL CORP.

9F-1, NO. 400, SEC. 1, CHANG PING RD., TAICHUNG, TAIWAN, R.O.C.

TEL: 886-4-2245-2818 (REP.) FAX: 886-4-2243-6928

E-mail: holytek@ms13.hinet.net

http://www.holytek.com.tw